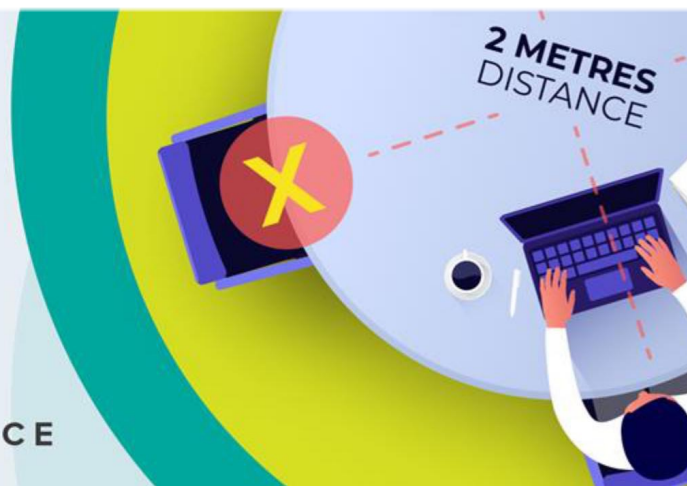


COVID-19 RESILIENCE STRATEGIES

IN THE WORK PLACE

PLANS. PROCESSES. PERFORMANCE



WHEN

As agreed by client

COURSE PRESENTATION

Instructor/Facilitator-led
and presented in English.
Course materials (slides
and notes) are in English.

MODE OF DELIVERY

In person
or
Virtual
(E-Workshop)

DURATION

1 Day

PRICE

~~₦~~ 25,000
per participant

INTRODUCTION

This course supports organisations, business/services in the development of business resilience policies and standard operating procedures to reduce the likelihood of transmission of COVID-19 in the workplace among staff. Thereby ensuring that businesses and organisations can continue to meet their corporate objectives in a covid-safe environment.

Objectives

Participants will learn:

- COVID-19 Basics (Workplace hazards & risks)
- Obligations of employers and employees under current health and safety legislation in Nigeria
- How, to analyse and assess COVID-19 risks in different workplaces. (Workplace COVID Risk audit)
- How to design and implement robust COVID-19 resilient control measures in the workplace - in a sustainable way
- How to design and implement robust COVID-19 incidence mitigation protocols (including embedding in Business Continuity Plans)

ORGANIZED BY



Centre for Sustainable Leadership

IN PARTNERSHIP WITH



EASYDATA
RESOURCES LIMITED

Course Content

- **Module 1 - COVID-19 in the Workplace, the basics of disease prevention and legal requirements**
- **Module 2 - Workplace COVID-19 risk management approach (risk analysis, assessment and control)**
- **Module 3 - Design and implementation of COVID-19 safety control measures (context-specific SOPs)**

Who should attend

This course is suitable for:

- **HR Managers**
- **Office Managers and Administrators**
- **Business Owners**
- **Compliance Officers**
- **Office Safety Champions**



For Course Fee, Booking and Enquiries

Tel: 08173475740
07057501160

info@easydata ltd.com